

INSTALLATION  
INSTRUCTIONS

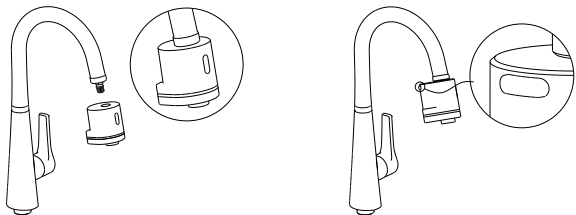
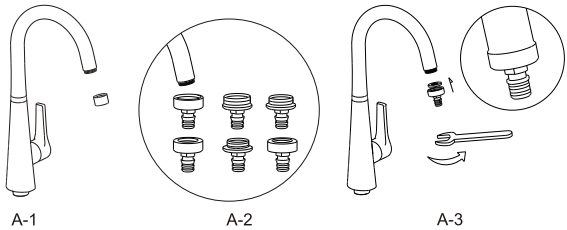
DIY Sensor Tap

BEFORE INSTALLATION

- 1.Please read the instructions carefully.
- 2.The sketch map is only for reference. Product appearance and accessories may differ from illustrations in manual.
- 3. Please prepare wrench, which is used to screw the connector.

INSTALLATION STEPS

- 1.Turn off the kitchen faucet handle and unscrew the faucet nozzle( Figure A-1).
- 2.Select correct male/female connector with filter net gasket. ( Figure A-2)
- 3.Screw the correct connector to the kitchen faucet and tighten the connector. ( Figure A-3) [Female connector M22\*1 has already plugged into DIY sensor tap body before shipment]
- 4.Put the DIY sensor tap body align with the connector, sensor is facing forward, plug into the connector( Figure A-4)  
Note: When disassembling, press and hold the button on the back of DIY sensor tap body, rotating and pulling out the DIY sensor tap body.
- 5.Turn on the handle, the installation is complete. If there is abnormality, please check the Troubleshoot.



FUNCTION

- 1. Wave-on Sensor: Hand wave once in front of sensor, water flow automatically, wave again, water stop.
- 2. Security off time: when washing time exceeds 180s,the device will automatically shut down the water supply to avoid water waste cause by blockage of the sensor.

- 3. Low power indication: This may indicate it is time to replace existing batteries with new ones or there is not enough power going to unit.

TECHNICAL DATA

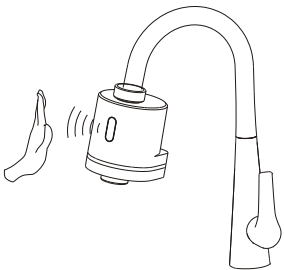
Working Power	DC3V			
Average static power consumption	<20uA	Instance max consumption	<600mA	
Water Pressure	0.05~0.7Mpa			
Sensing distance	10±2cm (reference: white board)			
Detection time	0.128s			
Maximum washing period	180s	Environment temperature	1~40℃	
Water temperature	0~65℃			
Connector	Male	M24*1	Female M22*1 M20*1 G1/2-14	
		M22*1		
		M20*1		
Product size	60.25*59.1*70.3mm			
Power supply	Built-in lithium battery			

FEATURE

- 1.Convenience: Hand wave once in the sensor range, water start to flow automatically; wave again, water stop.
- 2. Hygiene: Touchless design provides hands-free and germ-free operation.
- 3. Water saving: water efficient faucet reduces overall water usage without sacrificing water pressure.
- 4. Energy saving: Battery shall last approximately 100 times/ day for 5 years.

HOW TO USE

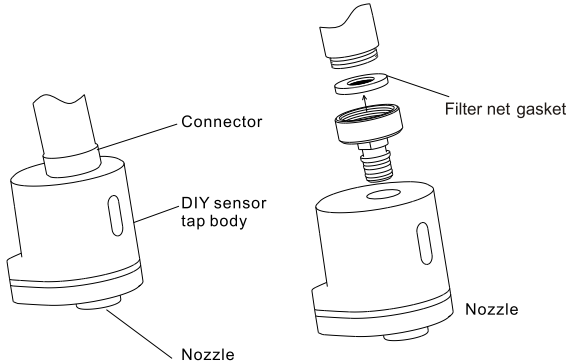
Your hand waves one time slowly in the sensor range, water starts to flow automatically; wave again, water stop.



MAINTENANCE

Clean the filter net

Turn off the handle, press and hold the button on the back of DIY sensor tap body, pull out it, screw out the connector, take out the filter net gasket and clean it with clean water, then install back after cleaning.



PRECAUTIONS FOR USAGE



1.Please use damp towel or cotton cloth to wipe gently.



2. Please avoid any rocking or violent motion.



3. Please DO NOT use acid / alkaline detergents for cleaning.

TROUBLESHOOTING

If problems are found during use, please refer to the following table to solve first:

Problem	Possible Reason	Suggested Solution
No water flow	Dirt on the sensor case	Clean sensor case
	Main water supply is shut off	Open water supply
	Dirt on water filter net	Clean the filter net
	Water pressure is not applicable	Refer to technical data
Having continuous water flow problem	Low water pressure	Refer to technical data
	Dirt on water filter net	Clean the filter net
Low water flow	Low water pressure	Refer to technical data
	Dirt on water filter net	Clean the filter net

WARRANTY

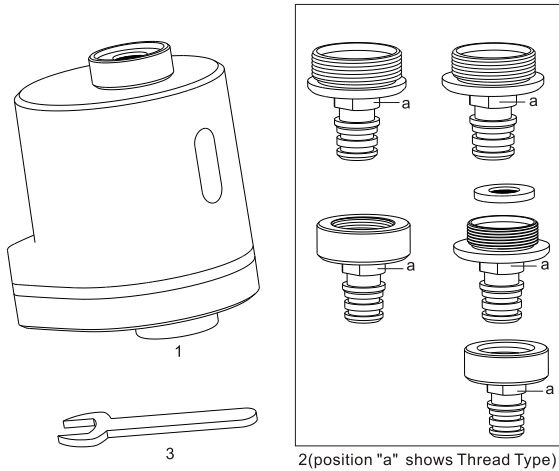
The faucet has a limited ONE year warranty if the faucet is properly install and used.

Warranty is voided if:

1. incorrect installation, replacement, repair, and similar improper actions.
2. industrial use and commercial use are excluded.
3. misuse, abuse, carelessness or use of accessories not provided by the manufacturer.

Original receipt is required for proof of purchase as warranty is one year from date of original purchase.

PACKING LIST



NO	Name	QTY
1	DIY sensor tap body (Include connector& filter net gasket)	1
2	Various types of connectors (including matching Filter net gasket)	1
3	Wrench	1
3	Installation Instruction	1

BOM

