

# INSTALLATION INSTRUCTIONS

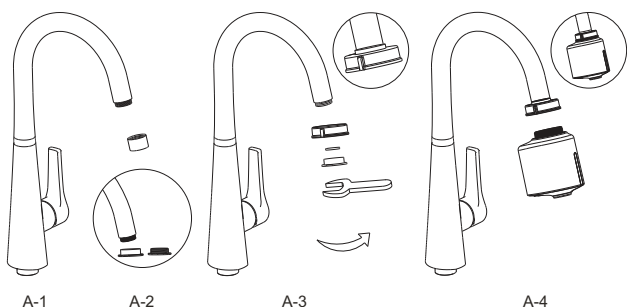
DIY Sensor Tap

## BEFORE INSTALLATION

1. Please read the instructions carefully.
2. The sketch map is only for reference. Product appearance and accessories may differ from illustrations in manual.
3. Please confirm to use standard 2AAA alkaline battery, make sure the battery polarity is installed correctly.
4. Please prepare wrench, which is used to screw the connector.

## INSTALLATION STEPS

1. Turn off the kitchen faucet handle and unscrew the faucet nozzle (Figure A-1)
2. Select correct male/female connector with sealing washer. (Figure A-2)
3. Put the nut into the kitchen faucet and tighten the connector. (Figure A-3)
4. Put the DIY sensor tap body align with the connector, sensor face forward, tighten the nut (Figure A-4)
5. Turn on the handle, the installation is complete and the sensor tap is ready to use. If there is abnormality, please check the Troubleshoot.



## FUNCTION

1. Wave-on Sensor: Hand wave once in front of sensor, water flow automatically, wave again, water stop.
2. Security off time: when washing time exceeds 180s, the device will automatically shut down the water supply to avoid water waste caused by blockage of the sensor.
3. Low power indication: This may indicate it is time to replace existing batteries with new ones or there is not enough power going to unit.

## FEATURE

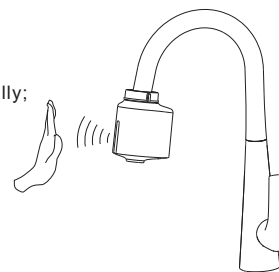
1. Convenience: Hand wave once in the sensor range, water start to flow automatically; wave again, water stop.
2. Hygiene: Touchless design provides hands-free and germ-free operation.
3. Water saving: water efficient faucet reduces overall water usage without sacrificing water pressure.
4. Energy saving: Battery shall last approximately 100 times/day for 3 years.

## TECHNICAL DATA

|                          |                                       |                |
|--------------------------|---------------------------------------|----------------|
| Working power            | DC3V                                  |                |
| Static power consumption | <20uA                                 |                |
| Instance max consumption | <600mA                                |                |
| Water Pressure           | 0.05~0.7Mpa                           |                |
| Sensing distance         | 10±2cm                                |                |
| Detection time           | 0.128s                                |                |
| Maximum washing period   | 180s                                  |                |
| Environment temperature  | 1~40°C                                |                |
| Water temperature        | 0~65°C                                |                |
| Connector                | Male : M24*1                          | Female : M22*1 |
| Size                     | 76*60*92.5mm                          |                |
| Power supply             | 2AAA alkaline batteries(not included) |                |

## HOW TO USE

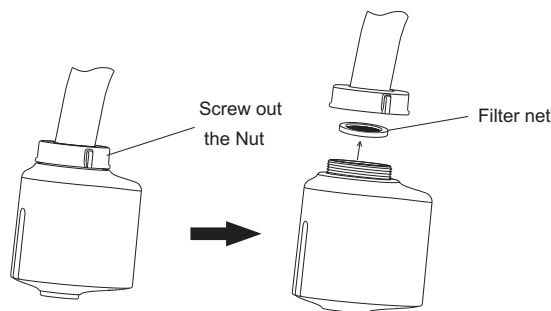
Your hand waves one time slowly in the sensor range, water starts to flow automatically; wave again, water stop.



## MAINTENANCE

Clean the filter net

Turn off the handle, screw out the Nut, take out the filter net and clean it with clean water, then install back after cleaning.



## BATTERY INSTALLATION

\*Sensor indicator will flash if battery power is low, alerting you to change batteries.

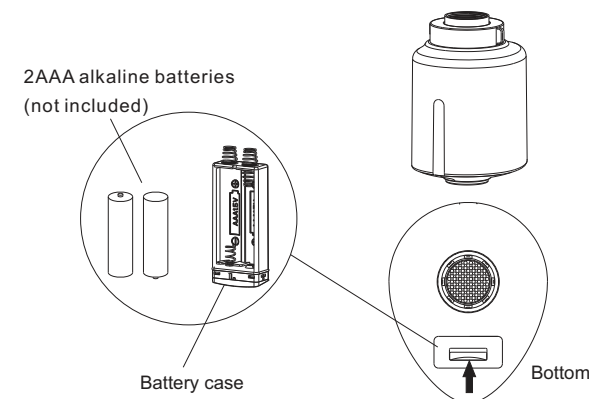
\*Sensor will close the valve to avoid water sacrificing if battery is running out.

Note: Make sure the batteries polarity are installed correctly. Do not mix new and old batteries, or different brands batteries.

## BATTERY INSTALLATION

Step 1: Press the button at bottom as the arrow showed, battery case will come out.

Step 2: Replace with two AAA alkaline batteries and put them back.



## PRECAUTIONS FOR USAGE



1. Please use damp towel or cotton cloth to wipe gently.



2. Please avoid any rocking or violent motion.



3. Please DO NOT use acid / alkaline detergents for cleaning.

## TROUBLESHOOTING

If problems are found during use, please refer to the following table first:

| Problem                              | Possible Reason                  | Suggested Solution      |
|--------------------------------------|----------------------------------|-------------------------|
| No water flow                        | Batteries run out                | Replace batteries       |
|                                      | Dirt on the sensor case          | Clean sensor case       |
|                                      | Main water supply is shut off    | Open water supply       |
|                                      | Dirt on water filter net         | Clean the filter net    |
|                                      | Water pressure is not applicable | Refer to technical data |
| Having continuous water flow problem | Low water pressure               | Refer to technical data |
|                                      | Dirt on water filter net         | Clean the filter net    |
| Low water flow                       | Low water pressure               | Refer to technical data |
|                                      | Dirt on water filter net         | Clean the filter net    |
| Short battery life                   | Bad/old batteries                | Replace batteries       |
| Undetected                           | Batteries run out                | Replace batteries       |
|                                      | Batteries polarity install wrong | Reinstall correctly     |

**WARRANTY**

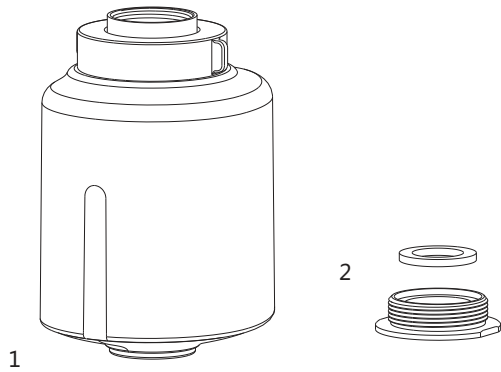
\*The faucet has a limited ONE year warranty if the faucet is properly install and used.

Warranty is voided if:

1. incorrect installation, replacement, repair, and similar improper actions.
2. industrial use and commercial use are excluded.
3. misuse, abuse, carelessness or use of accessories not provided by the manufacturer.

\*Original receipt is required for proof of purchase as warranty is one year from date of original purchase.

**PACKING LIST**



| NO | Name   | QTY |
|----|--|-----|
| 1  | DIY sensor tap body<br>(include female connector and gasket) | 1   |
| 2  | Male connector and gasket                                    | 1   |
| 3  | Installation instruction                                     | 1   |

**BOM**

